

The Epworth Centre for Immunotherapies and Snowdome Laboratories (ECISL) contribution to national and international clinical data registries in Myeloma and Lymphoma

Introduction

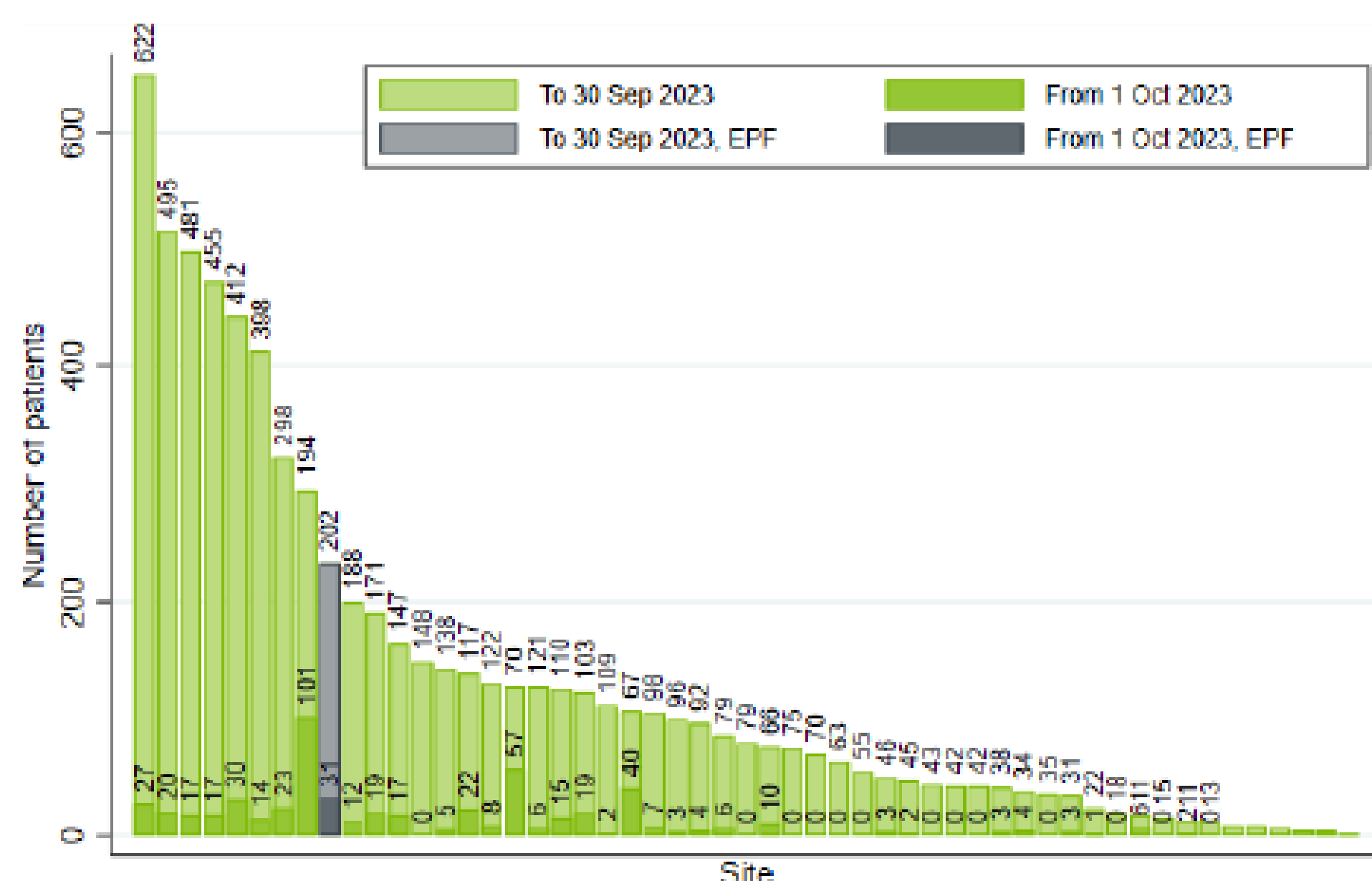
Epworth Healthcare contributes to clinical data registries - Myeloma and Related Diseases Registry (MRDR), and Lymphoma and Related Diseases Registry (LARDR) - coordinated by the Molecular Oncology and Cancer Immunology research group.

Contribution to clinical data registries is important in general and in particular for our patients diagnosed with myeloma and lymphoma respectively. The aims of the Australian and New Zealand registries are to monitor access to care, benchmark outcomes nationally and internationally, explore variation in practice, process and outcome measures, monitor trends in incidence and survival, explore the factors that influence outcomes including survival and quality of life and act as a resource for clinical research and trials.

MRDR Reporting

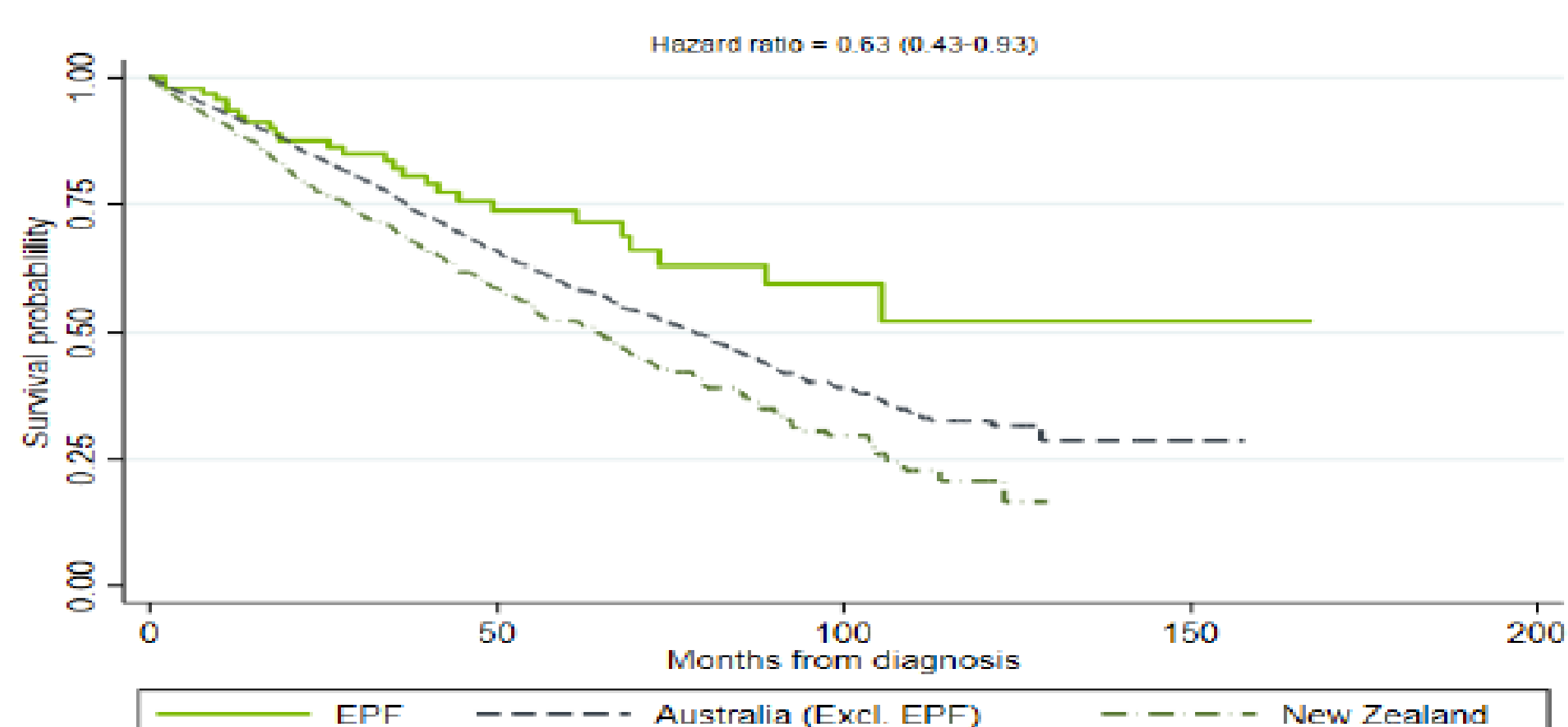


There are 53 active sites across Australia & New Zealand, and Epworth Freemasons ranks as the top 9th contributor.



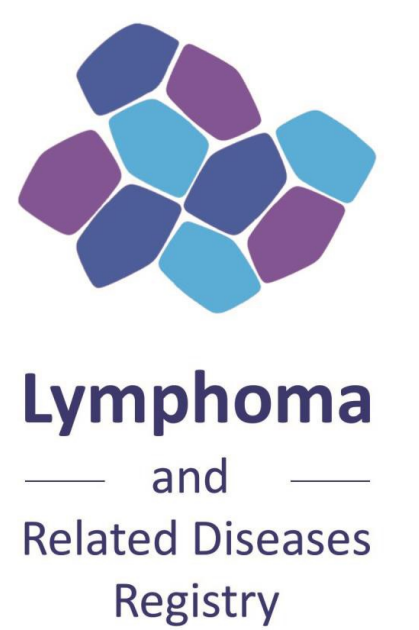
The MRDR site report also demonstrates that Epworth Freemason's myeloma patients have a better overall survival trend compared to other sites. Epworth patients with myeloma also demonstrate superior progression-free survival compared to other sites.

Overall Survival of Epworth MRDR patients.

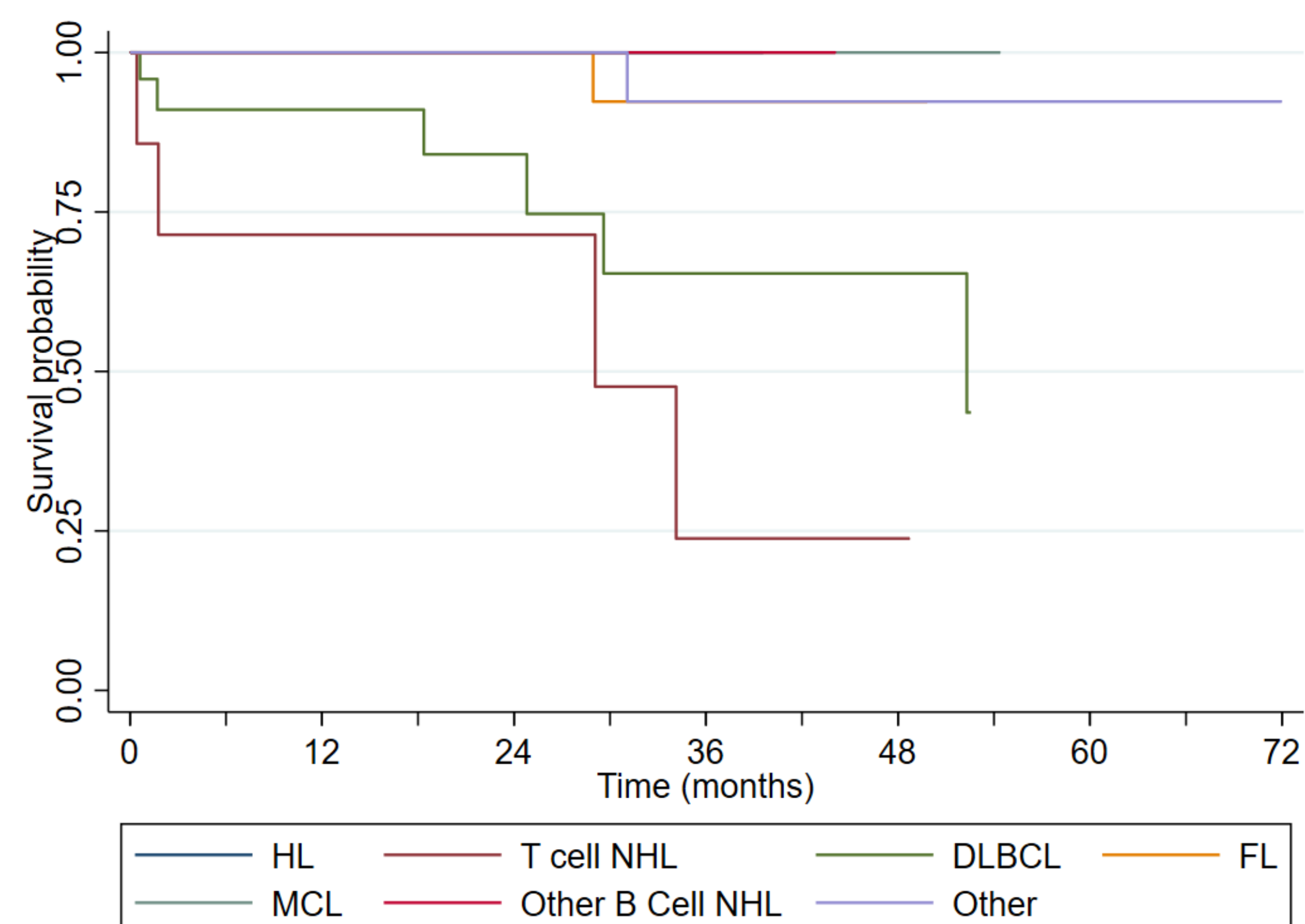


LaRDR Reporting

There are 35 participating sites across Australia, and Epworth ranks as the top 13th contributor. The LaRDR site reports Epworth Freemasons lymphoma patients' overall survival and progression-free survival by diagnosis. Both results demonstrate reasonably good survival probabilities. The LaRDR site report specifies Epworth's patients with diffuse large B cell lymphoma (DLBCL) having a higher rates of complete response compared to other sites.



Overall Survival of Epworth LARDR patients by diagnosis.



Additional Research Contribution

In addition to Epworth Freemason's patients enrolment in both MRDR and LaRDR, many of these patients are also consenting to the Molecular Oncology and Cancer Immunology (MOCI) Biobank Study. Currently, 46% of registered MRDR patients are co-consented to the MOCI Biobank Study, with 76% diagnosed with multiple myeloma. 60% of registered LaRDR patients are also co-consented to the MOCI Biobank Study, with 70% diagnosed with a Non-Hodgkin's B-cell Lymphoma.

Furthermore, Epworth-LaRDR data has contributed to 11 completed projects and 6 current projects.



ORIGINAL PAPER

Infection risk and antimicrobial prophylaxis in bendamustine-treated patients with indolent non-Hodgkin lymphoma: An Australasian Lymphoma Alliance study

Kate Manos, Leonid Churilov, Andrew Grigg, Pietro Di Ciaccio, Jonathan Wong, Usha Chandra Sekaran, Joel Wight, Zhong Goh, Hayden Jina, Llewyn Butler, Costas K. Yannakou, Nada Hamad ... See all authors

This research project was made possible with thanks to the generosity of donors of the Epworth Medical Foundation. The authors gratefully acknowledge the Epworth Knowledge Services' contribution to this work.